



GMT MONTHLY MEMBERSHIP PROGRESS REPORT

Results as of: 7/31/2019

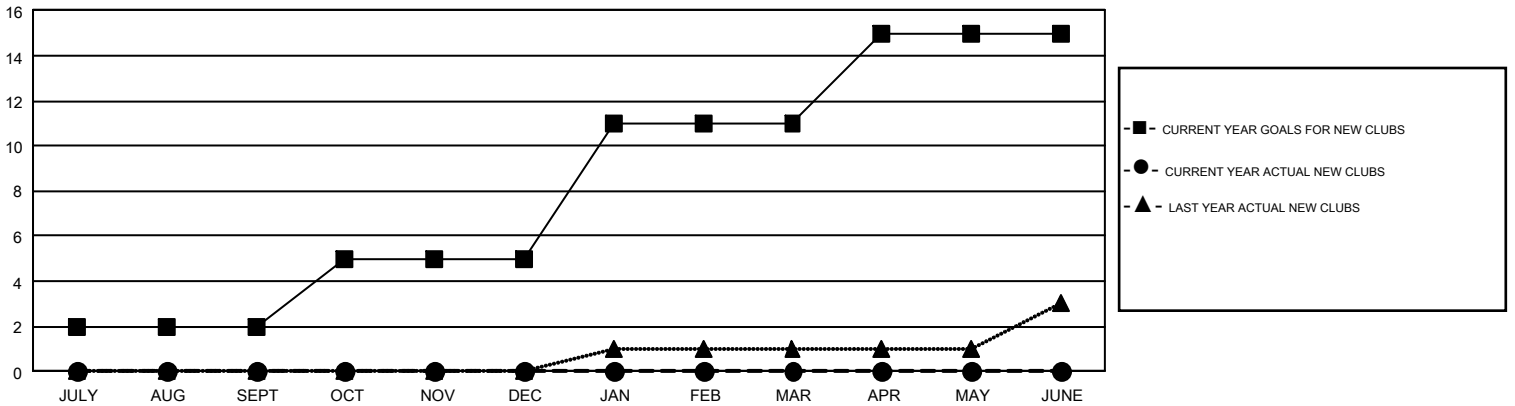
GMT Constitutional Area 1, Group K

GMT: OPEN

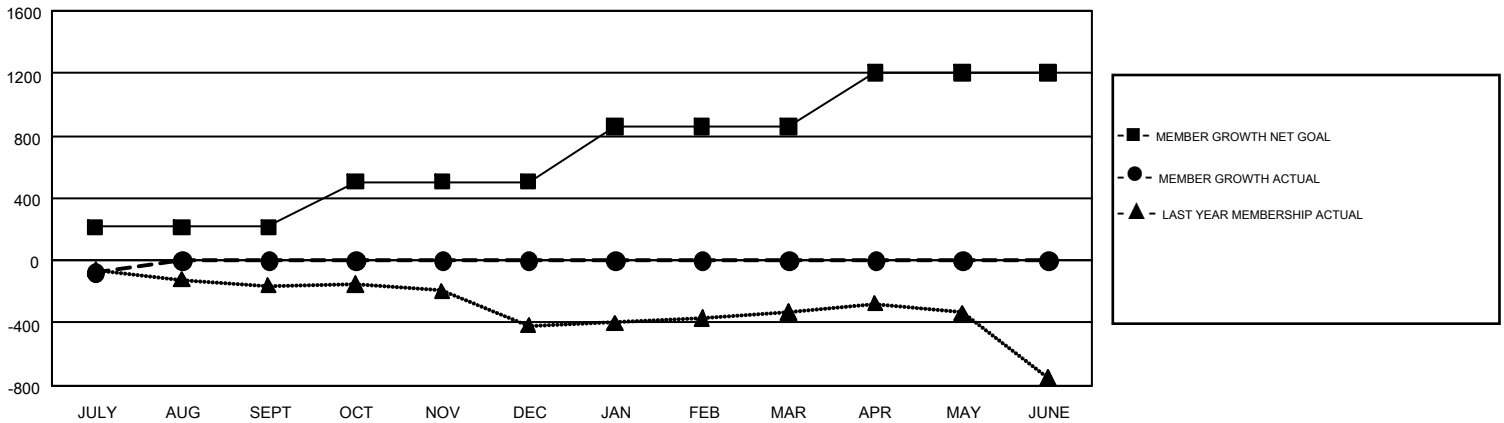
REPORT DOES NOT INCLUDE CLUBS IN UNDISTRICTED AREAS.

Clubs				Members			
RESULTS FOR 2019-2020				RESULTS FOR 2019-2020			
QUARTER	NEW CLUB GOAL	NEW CLUBS	DROPPED CLUBS	QUARTER	MEMBER GROWTH NET GOAL	MEMBER GROWTH ACTUAL	DROPPED MEMBERS ACTUAL (including transfers)
JULY/AUG/SEPT	2	0	3	JULY/AUG/SEPT	215	108	161
OCT/NOV/DEC	3	0	0	OCT/NOV/DEC	291	0	0
JAN/FEB/MAR	6	0	0	JAN/FEB/MAR	351	0	0
APR/MAY/JUNE	4	0	0	APR/MAY/JUNE	349	0	0

GOALS AND ACTUAL NEW CLUBS CUMULATIVE



GOALS AND ACTUAL MEMBERS CUMULATIVE



DROPPED CLUBS: 3	51 CLUBS OF 594 ADDED 1 OR MORE NEW MEMBERS	<u>GENDER DISTRIBUTION</u>	
<u>DROPPED MEMBERS</u>		MALE	11,863 (64.73%)
DECEASED	17	FEMALE	6,464 (35.27%)
CLUB CANCELLED	0	TOTAL FAMILY UNIT MEMBERS	
OTHER	144	3,524	
TOTAL	161	FAMILY MEMBERS PAYING HALF DUES	
		1,804	

[CLICK HERE FOR CUMULATIVE MEMBERSHIP DATA](#)